

## IMPROVEMENT OF PAVEMENTS



### AIM

The aim of this project would be to improve the pavement and path network in the Peninsula West area, specifically the creation of a pavement on the Mill Brae to Barbour Road section of Rosneath Road in Kilcreggan.

### OUTPUTS

By the end of the projects the output that could be achieved is:

- 175 metres of pavements provided

### OUTCOMES

The associated outcomes would be:

- More accessible paths for all in the Peninsula West area
- New and upgraded pavements in the area

### NEED FOR PROJECT

#### STATISTICAL EVIDENCE OF NEED

The pavement on Shore Road ends just after the junction with Fort Road and there is then no footpath on the hill up Mill Brae. As a result, this is a particularly dangerous section of the road for pedestrians. The road connects Rosneath to Kilcreggan and the Peninsula West villages, however, the lack of footpath prevents pedestrians walking across the Peninsula.

### COMMUNITY DEMAND FOR PROJECT

#### COMMUNITY SURVEY

Pavements and paths in the Peninsula West area were selected as a top three priority project by over half of all respondents (55%) to the survey. Fourteen respondents left comments on the need to improve Mill Brae and Barbour Road to ensure safe access to Rosneath from Kilcreggan on foot.

## COMMUNITY PRIORITISATION EVENT

'Upgrading existing pavements' received by far the most selections as the top pavement/path issue in the Peninsula West area. This was followed by 'creating additional pavements where possible' and 'creating a shore front footpath where possible'. Increasing pavement width and addressing overhanging hedges were both selected as top priority issues for improving pavements. 37% of participants that completed this board selected 'Mill Brae – Barbour Road' as a priority area for new/upgraded footpaths.

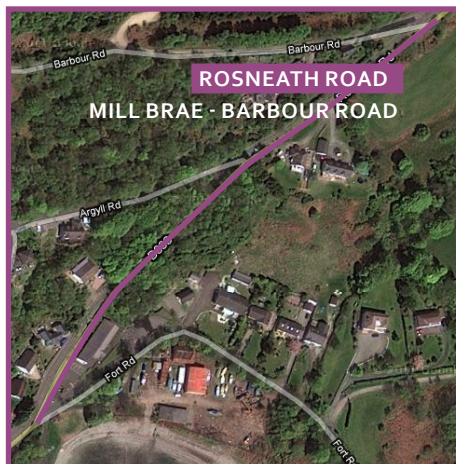
## RELEVANT POLICIES

Argyll and Bute Transport Strategy:

- In many of our towns and villages a lack of safe walking and cycling links reduce the opportunities to take part in active travel.
- A start has been made on creating new links from towns and villages to schools through the implementation of School Travel Plans and the Safer Routes to Schools initiative.
- There is a general lack of fit for purpose cycling / walking routes within local communities.

## POTENTIAL PROJECT

There could be potential to add to this access project by development of paths as part of a training and employment project to deliver wider benefits for those affected by unemployment and poor skills attainment. This could be developed by the Trust in conjunction with Argyll and Bute Employability Team. This model has been used to create a network of new or improved pavements and paths across Helensburgh and Lomond previously. Further input from Argyll and Bute Access Team could support inclusion of any new paths within the core paths plans for the area and consideration should be made to develop routes to an adoptable standard by the local authority.



## CURRENT OWNERSHIP OF SITE

Council owned

## COST OF PROJECT

£60,000 (Approx. 200m in length and 1.20m wide)

## POTENTIAL FUNDERS

**New Deal Work Programme** will provide input if this is developed as an Employability Project. In addition, with the support of the Access Team there could be further strategic paths funding available from Argyll and Bute Council Access Team or other partners such as **Paths for All** or **Sustrans**.

Alternatively, the **Scottish Rural Development Programme** could be accessed for a significant proportion of costs where landowners (including private landowners developing projects of community benefit) could register with Rural Payments SGRPD to secure funding contracts in line with Argyll and Bute SRDP Rural Priorities to promote greater accessibility.

## POTENTIAL PARTNERS

**Argyll and Bute Employability Team** – If the project had an employability element to it, the Trust could work with the Employability Team. By working in partnership with this department, the Trust would have access to a group of previously unemployed young people and their supervisors who can help arrange and conduct improvements across the Argyll and Bute Council area.

**Argyll and Bute Access Team** – Some of the areas proposed for the development of paths in the Community Plan are included in the Argyll and Bute Core Paths Plan. The Trust could therefore work with the Access Team who are responsible for the development of core paths and could provide support to develop and maintain these paths.

**Paths for All** – Paths for All is an existing project to develop paths across Scotland. The Trust could work in partnership with this group to utilise their contacts and experience when developing paths in the Peninsula West area.

**Argyll and Bute Council Roads Department** – As some of the proposed paths will be owned by the Council, the Trust should also work with the Roads department to develop a long term maintenance plan for any improvements.

## PROJECT EXAMPLES

### NEWBURGH COMMUNITY TRUST

In 2006 there was the opportunity to purchase some of the town waterfront. The sea wall and the three piers have lain neglected for half a century and through the Land Reform Act, the Trust was able to take the opportunity to purchase these and regain part of the area's heritage. This occurred just after the community informally converted a former factory site into a recreational park. The group has upgraded the riverside path as part of a much wider network of paths in the local area.

### BIRSE COMMUNITY TRUST

BCT manages parish wide natural heritage, cultural heritage and footpath programmes together with a wide range of community development projects and many related activities including the publication of local books.

## CONTACTS

### A&B Council Roads

Blairvadach  
Rhu by Shandon  
01436 658866

### A&B Employability Team

Old Quay Buildings  
The Pier  
Campbeltown  
PA28 6EF  
01586 551389

### Newburgh Community Trust

Mid Shore House  
Mid Shore Road  
Newburgh  
Fife  
KY14 6BG  
01337 870209

### Paths for All

Office 8 Forrester Lodge  
Inglewood House  
Tullibody Road  
Alloa  
FK10 2HU  
01259 218888